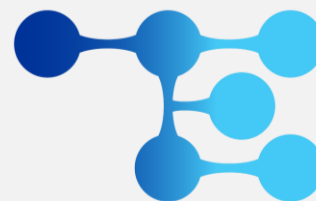
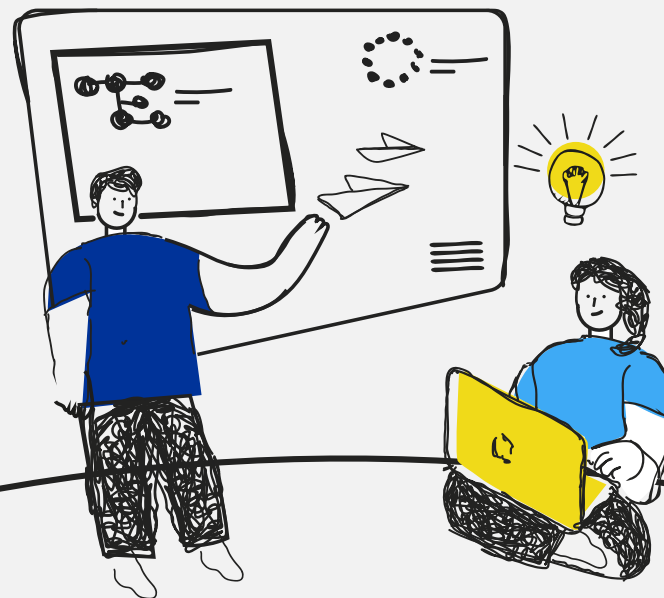
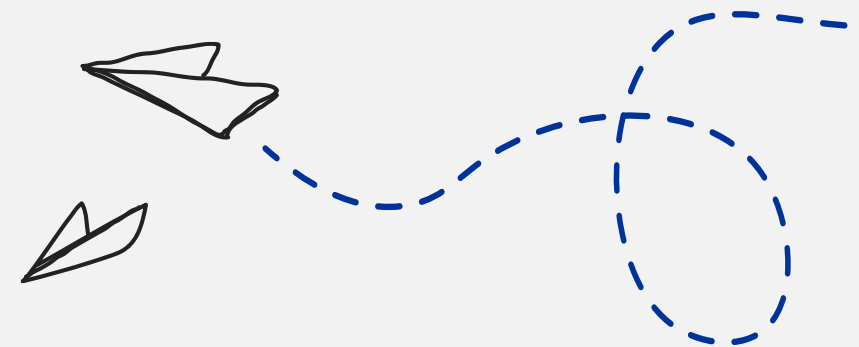




Co-funded by
the European Union



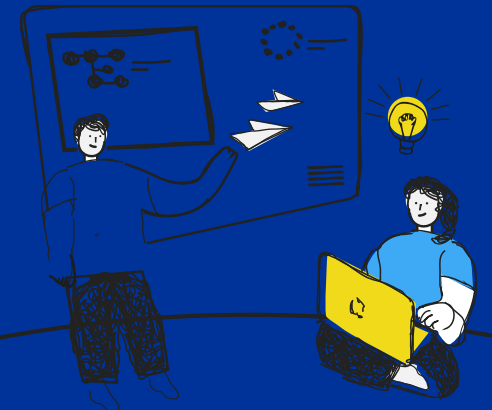
TINKERVERSE
SkillBuilders Lab



AMBASSADOR PLAN – DRAFT

CFIE de Burgos

Presentation KOM, May 7th and 8th, 2026



Key Area 1: Teacher Engagement and Activation

1. IDENTIFY



Identifying motivated teachers and centers interested in the Project.

2. TRAIN



Providing initial training to support their understanding of Maker-based learning and project activities.

3. CONNECT



Maintaining communication with participating centers and supporting the exchange of information between them and the partners.

Key Area 2: Creation of a Community of Practice

1. CREATE



Creating a core group of motivated teachers from participating centres through participation in project activities.

2. COLLABORATE



Using digital platforms (e.g. Microsoft Teams, OneDrive, Google Drive...) to support collaboration and communication.

3. SHARE



Organising regular online meetings to share experiences and discuss project activities, encouraging the exchange of classroom practices, materials and ideas.

4. CONNECT



Promoting collaboration between teachers from different centres and countries and organising an annual dissemination event to share results and strengthen the network.

5. SUSTAIN



Exploring the possibility of linking the Community of Practice with training activities organised by the CFIE to support participation and sustainability.

Key Area 3: Dissemination and communication activities



AT PROJECT LEVEL



Social media

Opening and managing project social media accounts.



Share & promote

Sharing updates, results and activities on social media.



eTwinning space

Supporting collaboration and exchange among partners.



Communication Plan (WP6)

Contributing to the development and implementation of the Communication and Dissemination Plan.



Newsletters

Sharing updates, results and upcoming activities.



Promotional materials

Designing posters and digital resources.



AT PARTNER LEVEL

Participating organisations will share project news, results and activities on their:



Websites



Social media channels



Direct Communication

mail and meetings.

Key Area 4: Events and networking

- 

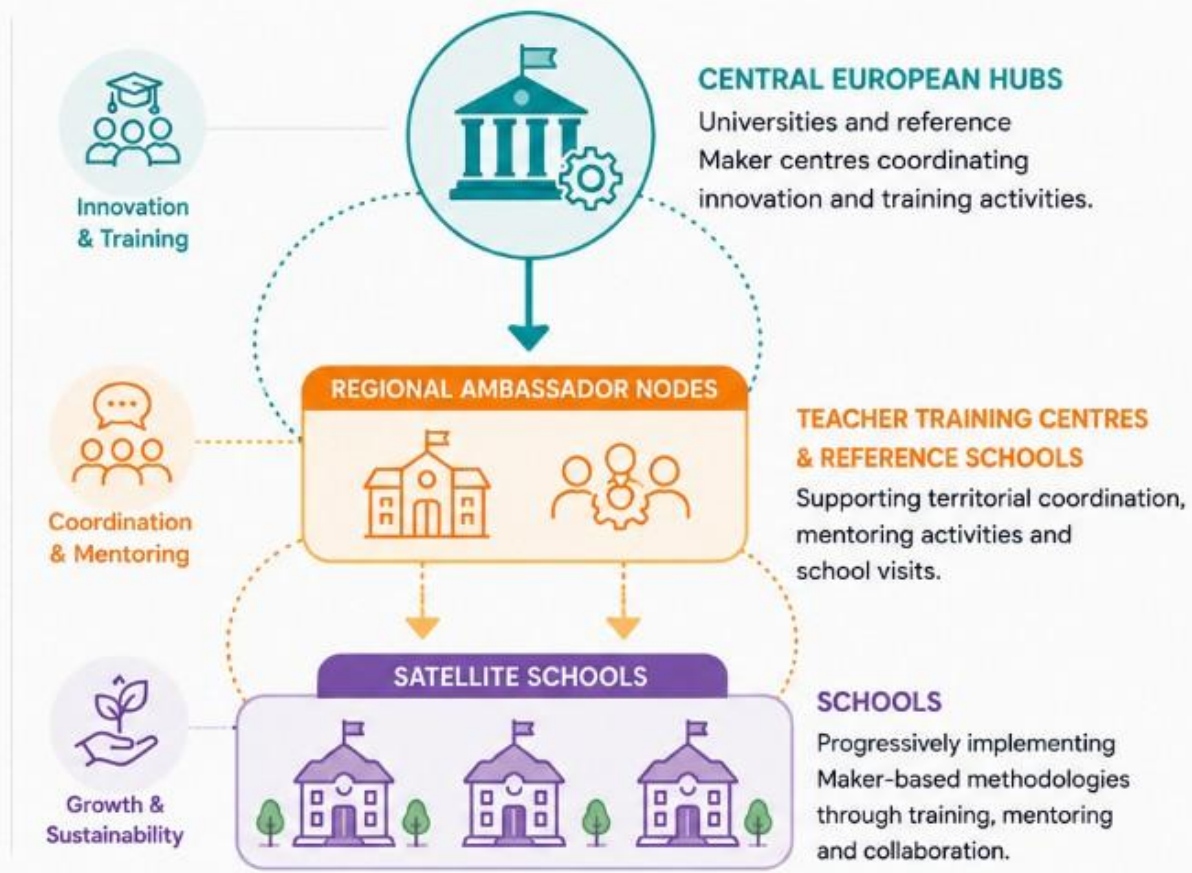
DISSEMINATION EVENTS
Sharing Maker-based learning and key competences through hands-on activities.
- 

TEACHER TRAINING
Training on Maker Spaces and active methodologies to transfer practices to the classroom.
- 

EXPERT WORKSHOPS
Inviting external experts to deliver workshops and training on Maker-based learning.
- 

EVENTS & NETWORKING
Participating in conferences and meetings to share outcomes and strengthen collaboration.

COLLABORATIVE NETWORK STRUCTURE



Key Area 5: Communication Channels and Tools



1 Digital platforms



to facilitate internal communication and coordination among project partners.



2 Shared repositories



to store, organise and share project materials and resources.



3 Educational platforms

eTwinning

to support collaboration and the sharing of materials and experiences.



4 Social media channels

including project-specific accounts, to disseminate activities and results and reach a wider audience.



5 Project website

where project information will be published and made accessible.



6 Websites of participating organisations

including sections related to internationalisation and innovation, to disseminate project activities and results.

Key Area 6: Innovation and engagement activities

1. CHALLENGE



Organising Maker challenges or hackathon-style activities to inspire ideas.

2. CREATE



Students develop solutions to real-life problems and build prototypes.

3. PRESENT



Students present their prototypes in **shared events** with peers, teachers and stakeholders.



IDENTIFY

Early Childhood Education & Lower Primary Education

Students observe, explore and identify real-life problems in their local context.



COLLABORATION
Across educational stages



CREATE

Upper Primary Education

Students design and build prototypes to solve the identified problems.



Conclusion

This plan will ensure that the impact of the Erasmus+ Forward-Looking Projects extend beyond its duration, promoting continuous improvement in education and teacher professional development.



Thanks for
your attention!